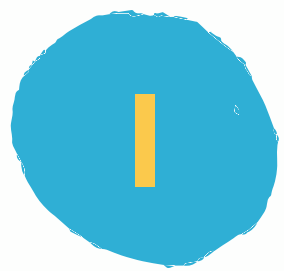


Coupon Quick Reference Guide



There are three types of coupons:



Digital Coupons

- Distributed through email
- These coupon will be received by players through the email address associated with their Fun Club Account.

Digital Coupon Example:



Printed Coupons

- Distributed through:
 - Promotions
 - Promotional/Retail Events
- These coupons will have a 16-digit bar code and will typically be 3.5" wide by 4" long in size.

Printed Coupon Example:



Fast and Easy Coupon Redemption Tips



All coupons have a unique validation number and barcode that allow them to be validated on your Lottery Terminal or Lottery Vending Machine.

Here are some reminders on redeeming coupons:

- Read coupon to determine offer.
- Make sure specified tickets are purchased before scanning coupon.
- ALWAYS scan coupon FIRST before giving prize to customer.
- All coupons MUST be scanned at the Lottery Terminal or Lottery Vending Machine in order to receive credit.

Upon scanning or manually validating a coupon, an authorization slip will generate. Staple authorization slip to coupon and keep for daily balancing.

Finding Your Credit For Coupons:

- Determine whether coupon is for Scratch-off or Draw Game (Pick 3/4, KY Cashball, Keno, Cash Pop, 5 Card Cash, Powerball or Mega Millions) product. If the coupon is for a Scratch-off product, the credit will be reflected in the DAILY INSTANT TICKET REDEEM REPORT under the COUPON line item.
- If the coupon is for a Draw Game product, the credit will be on the ONLINE DAILY SALES REPORT under the COUPON line item.
- By balancing daily you will be able to keep track of the coupons you have scanned and the credit received.

| TICKET SUMMARY | COUNT | AMOUNT |
|--------------------|-------|-----------------|
| 5.00 | 1 | 5.00 |
| 20.00 | 1 | 20.00 |
| TOTAL | | \$ 25.00 |
| DETAILS | | |
| COUPONS | 1 | \$ 2.00 |
| FREE TICKETS | | \$ 0.00 |
| GRAND TOTAL | | \$ 27.00 |
| ACTIVATIONS | | |
| GAME - PACK | | |
| TOTAL | 0 | \$ 0.00 |
| CLAIMS | 0 | \$ 0.00 |
| DELIVERIES | 0 | \$ 0.00 |
| FULL RETURNS | 0 | \$ 0.00 |
| PARTIAL RETURNS | 0 | \$ 0.00 |

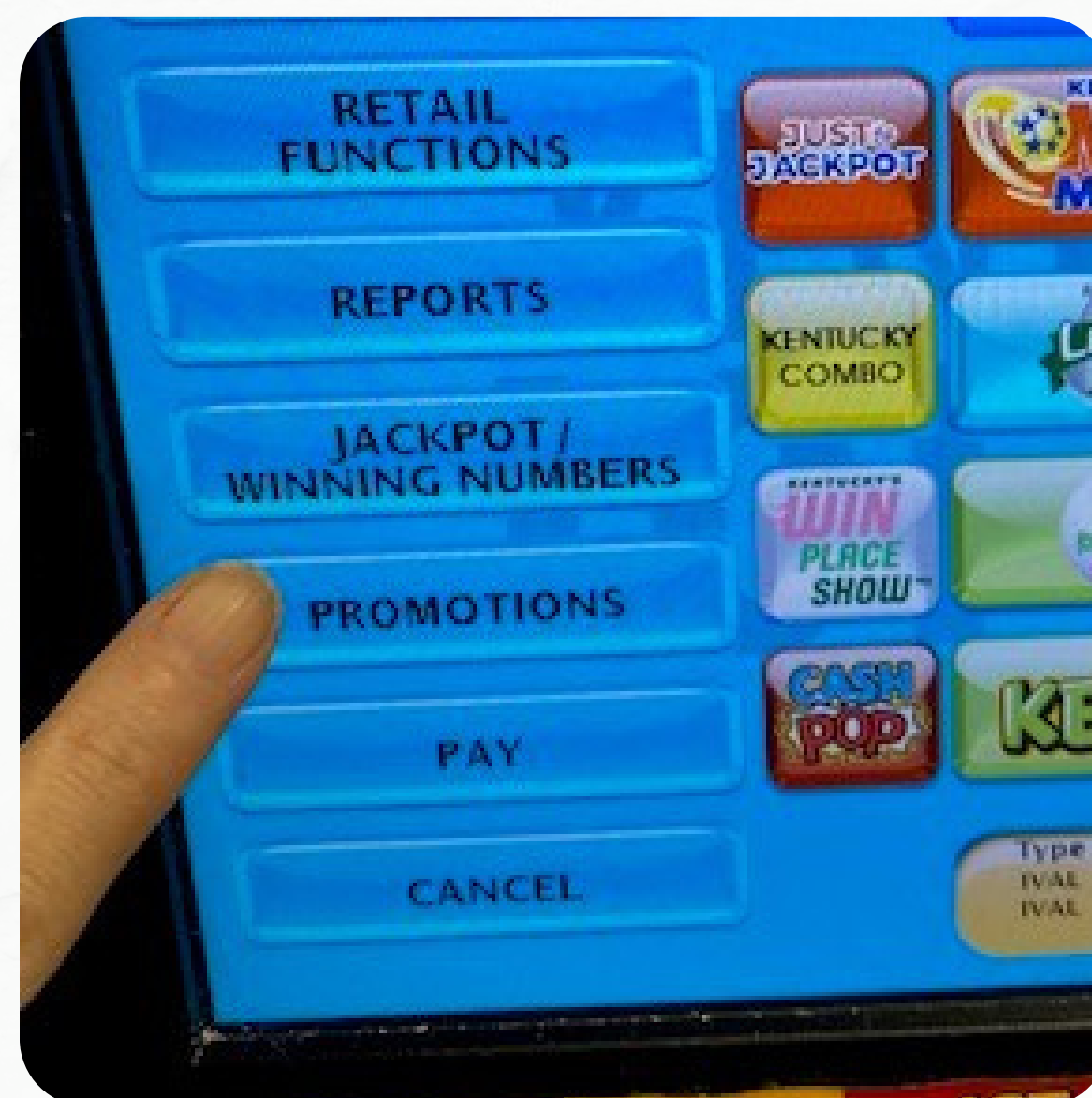
| PRODUCT | AMOUNT |
|------------------|--------------|
| 6 POWERBALL | 17.00 |
| 5 PICK 3 | 5.00 |
| 4 PICK 4 | 2.00 |
| 5 KY CASH BALL | 10.00 |
| 0 KY QUICK BUCKS | 0.00 |
| 7 5 CARD CASH | 14.00 |
| 1 KENO | 10.00 |
| 1 KY CASH POP | 5.00 |
| 0 WIN PLACE SHOW | 0.00 |
| 3 MEGA MILLIONS | 9.00 |
| 3 LUCKY FOR LIFE | 6.00 |
| 0 FAST PLAY | 0.00 |
| 0 FUNDS | 0.00 |
| 0 GIFTS | 0.00 |
| 3 RAZ | 5.00 |
| 1 CANCELS | 1.00 |
| 1 COUPONS | 3.00 |
| 0 PROMOTIONS | 0.00 |
| 0 PROMO CASH | 0.00 |
| 1 FREE PLAYS | 2.00 |
| 0 REPLACE PLAYS | 0.00 |
| TOTAL \$ | 67.00 |

Fast and Easy Coupon Redemption Tips



When a coupon is presented use the Kentucky Lottery Terminal to process.

1 Press the "Promotions" button on the main Kentucky Lottery terminal screen.



PROMOTIONS

Printed / Mobile Coupon

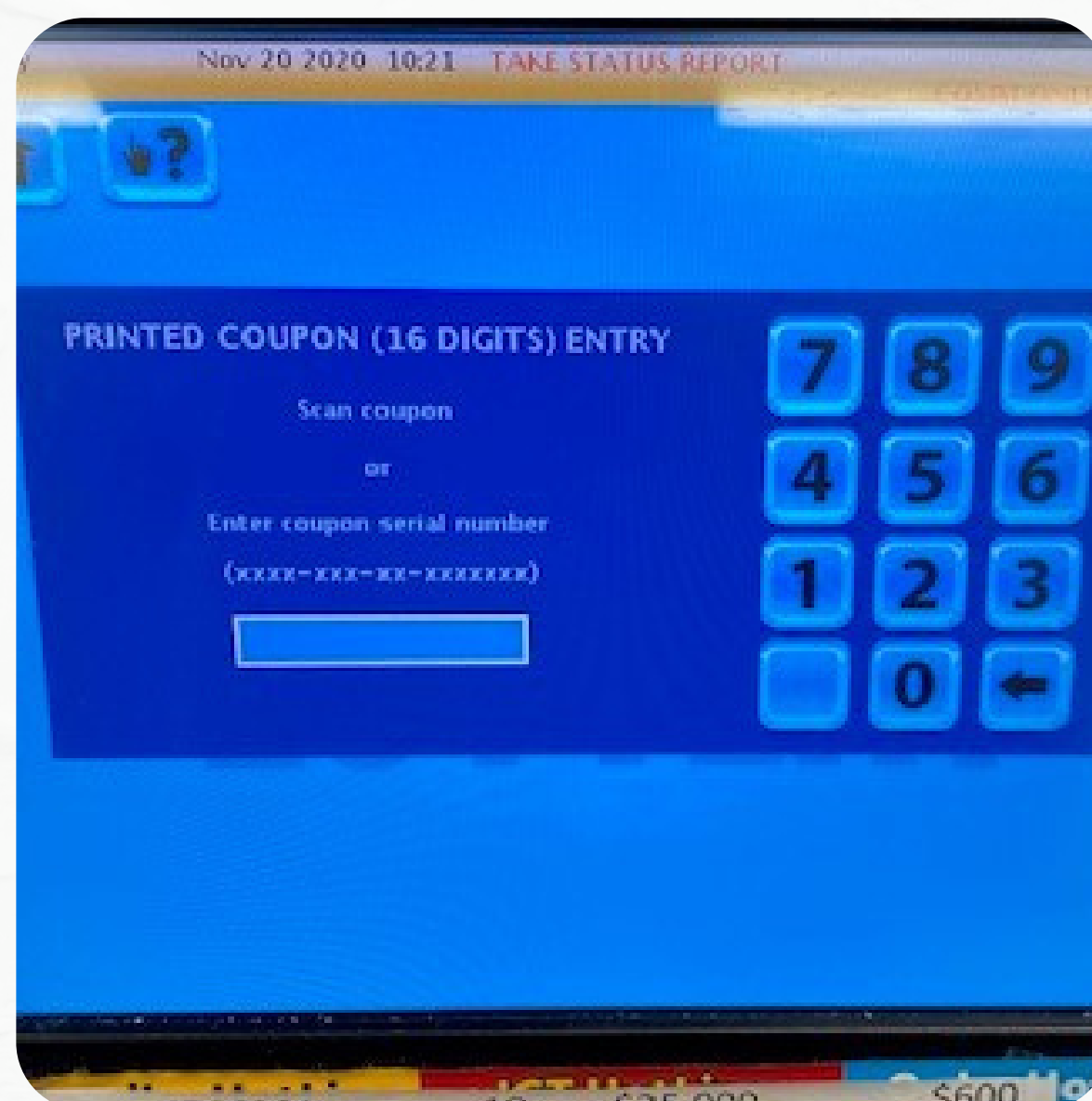
Terminal Coupon

2

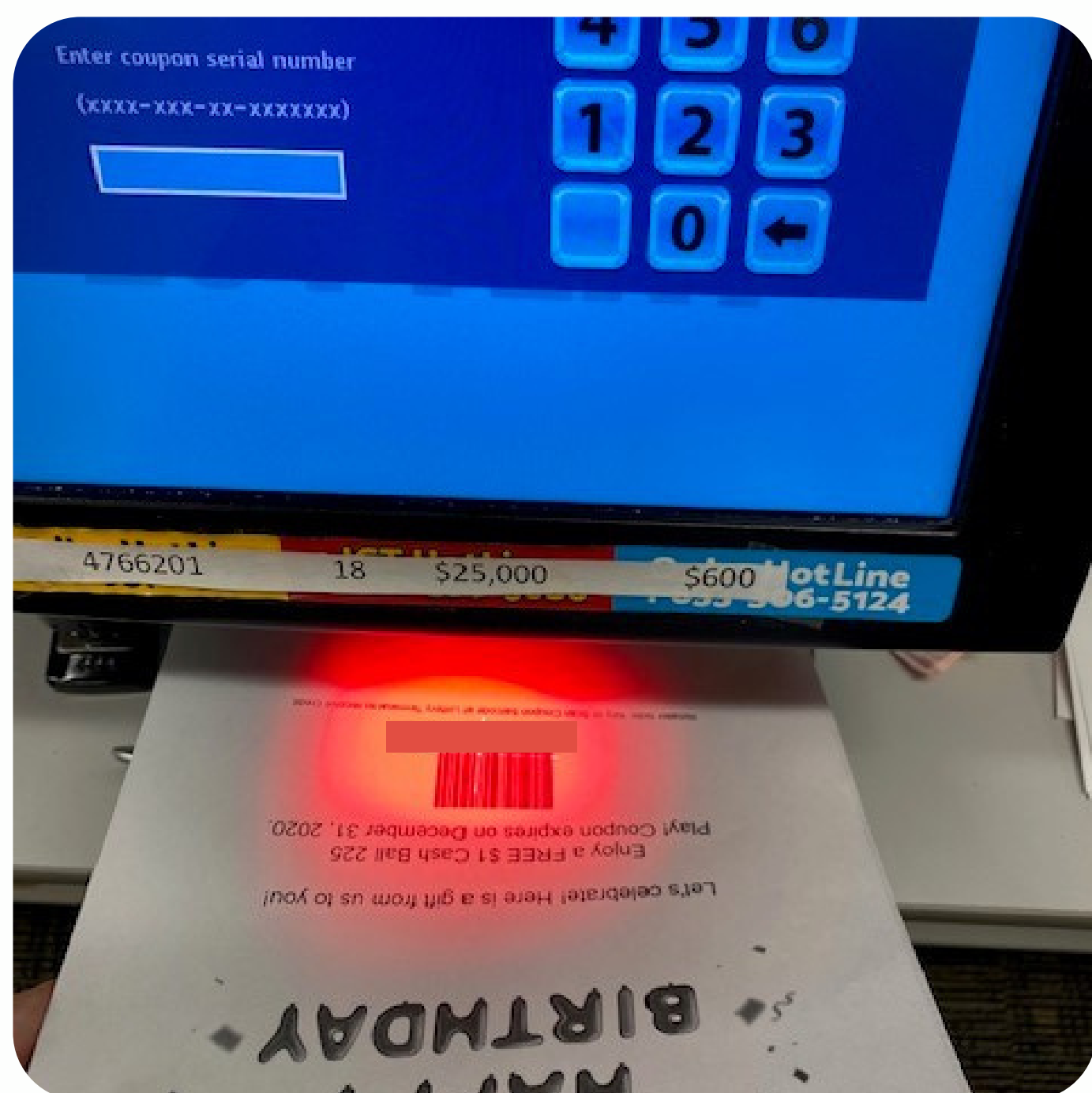
Press the "Printed/Mobile Coupon" button on the Promotions Screen.

3

Once the "Printed Coupon (16 Digits) Entry Screen" is on your terminal you may scan or manually enter the coupon.

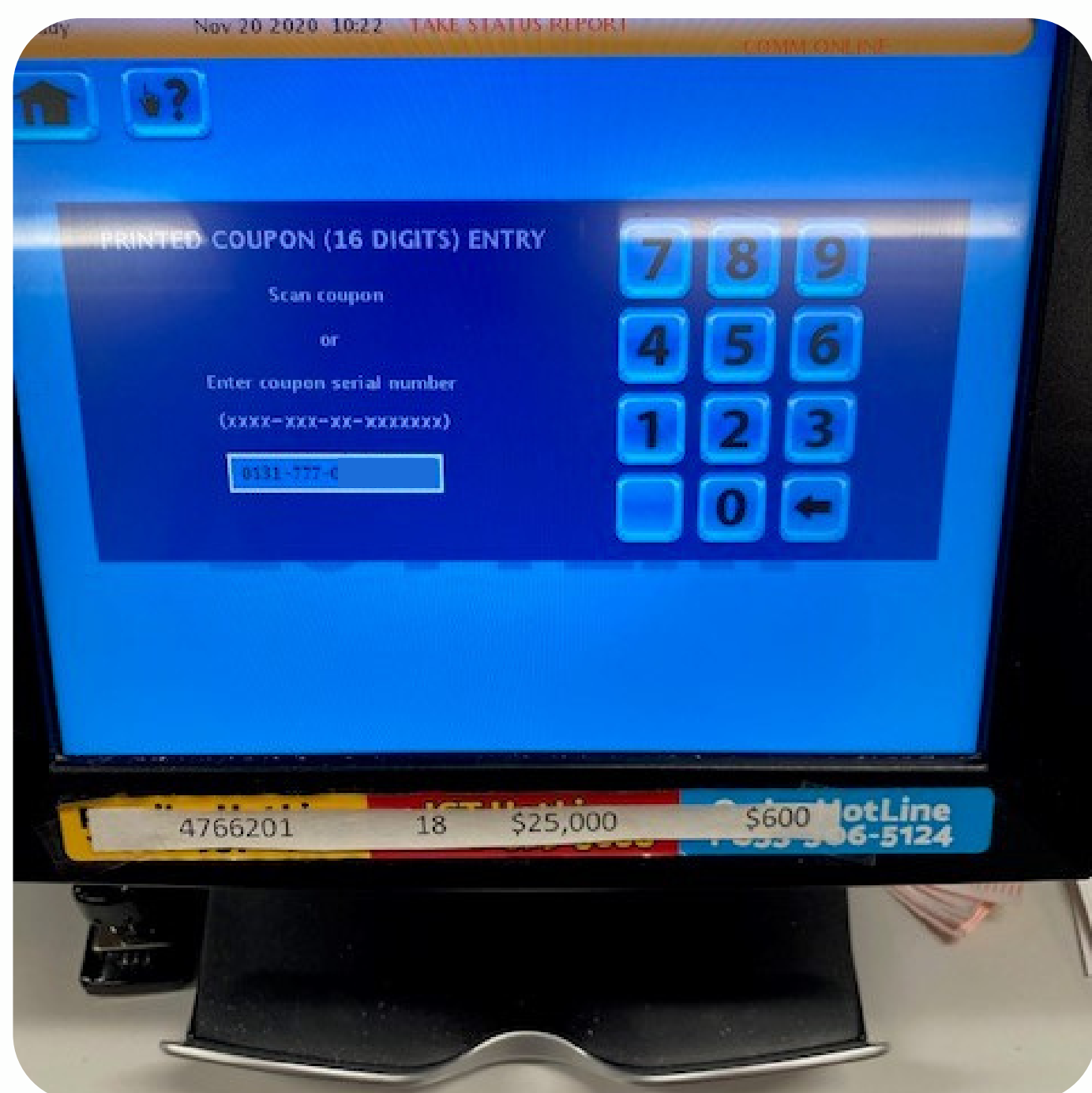


Fast and Easy Coupon Redemption Tips



4

Scan the printed or mobile barcode.



5

If the barcode will not scan - manually type the 16 digit coupon code (code is located just under the printed or mobile coupon barcode)

Fast and Easy Coupon Redemption Tips



How to help a player scan a coupon at a Kentucky Lottery Vending Machine:

- Scan coupon barcode at the vending machine (you will see the credit applied).
- Redeem by selecting the game and price point printed on the coupon.
- Scratch-off selection(s) should dispense in the bin located near the bottom of the machine and Draw Game tickets will be printed.



****Scratch-off Coupons CANNOT be redeemed on Game Touch Draw Lottery Vending Machines.**

